

## روش اتصال Intuos Creative Stylus در برنامه ها.

\*\*\* در تنظیمات اول Ipad Multitasking را غیر فعال کنید.\*\*\*

Settings > General > Multitasking Gestures

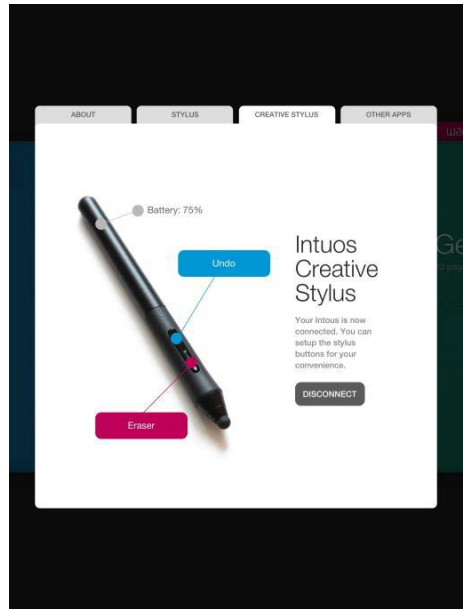
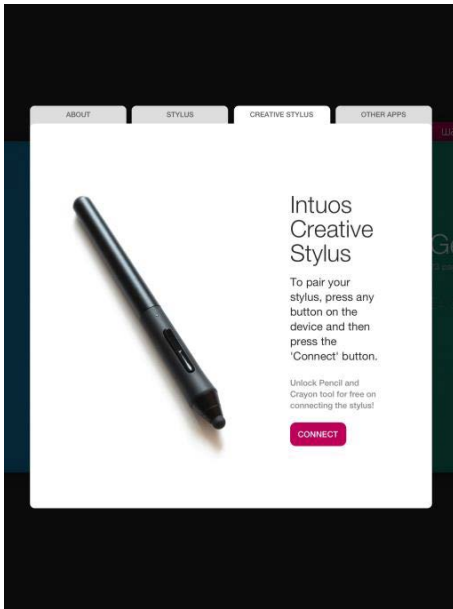
برنامه های:

- 1- Bamboo Paper
- 2- Sketchbook Pro / Sketchbook
- 3- Procreate
- 4- Art Rage
- 5- ibis Paint
- 6- Inkist X
- 7- Zen Brush
- 8- Ink



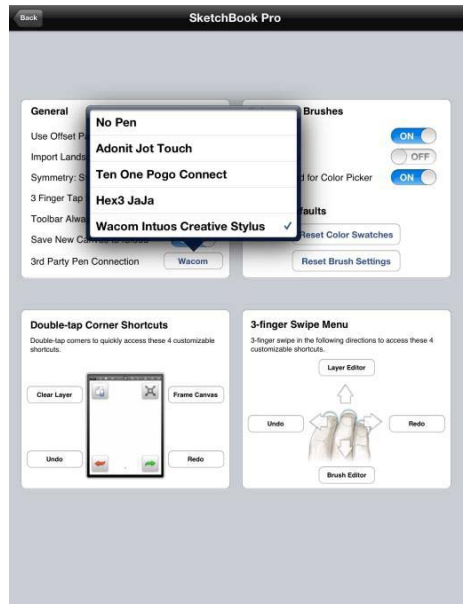
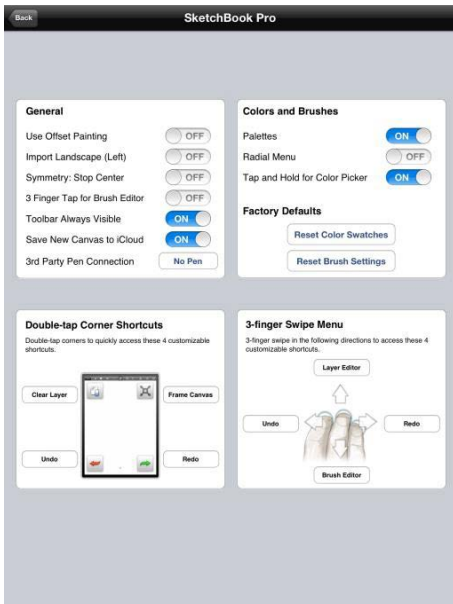
## Bamboo Paper

- 1- Open app
- 2- Tap on on „i“ symbol in bottom menu
- 3- Tap on “Creative Stylus”
- 4- Follow instructions



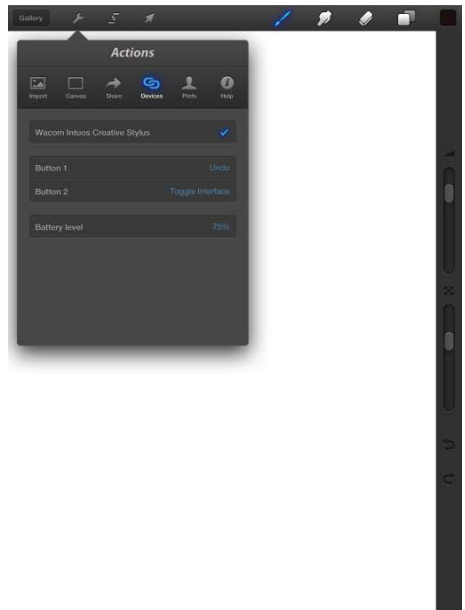
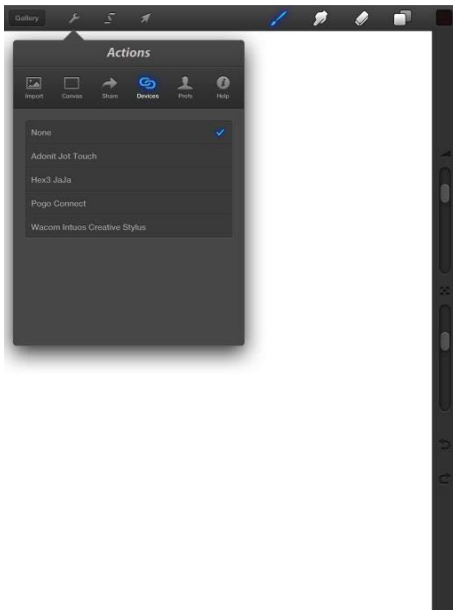
## Sketchbook/Sketchbook Pro

- 1- Open app
- 2- Open image in „edit“ mode
- 3- Tap on „i“ symbol in top menu
- 4- Tap on “Preferences”
- 5- Select “Wacom Intuos Creative Stylus” in drop down menu from “3rd Party PenConnection”
- 6- Press side switch on ICS to start pairing – LED starts blinking in blue
- 7- Once the LED stays blue for two seconds the ICS is correctly paired with the app



## Procreate

- 1- Open app
- 2- Open image
- 3- Tap on tool symbol in top menu
- 4- Tap on “Devices”
- 5- Select “Wacom Intuos Creative Stylus” in list
- 6- Press side switch on ICS to start pairing – LED starts blinking in blue
- 7- Once the LED stays blue for two seconds the ICS is correctly paired with the app. A small message box confirms “Connected”.
- 8- Note: Here button settings can be changed and the battery level can be checked.



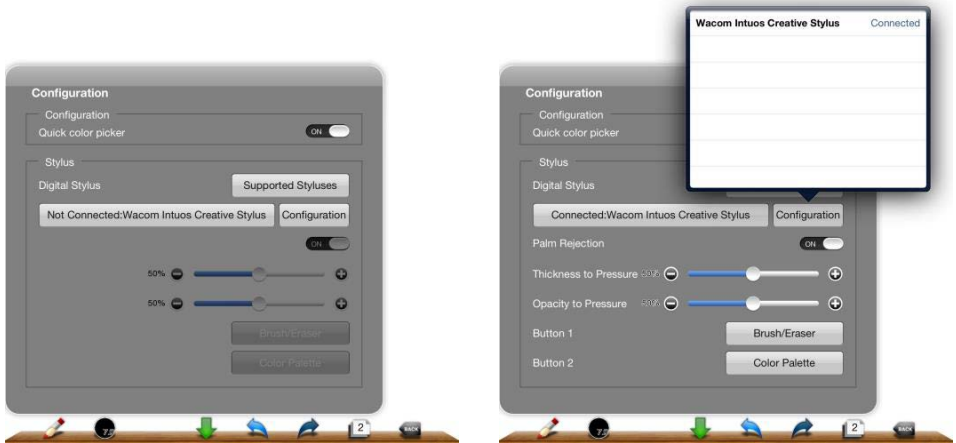
## ArtRage

- 1- Open iOS settings
- 2- Tap on “ArtRage” in left settings list
- 3- Select “Wacom Intuos Creative” in drop down menu from “Use Stylus Type”
- 4- Press side switch on ICS to start pairing – LED starts blinking in blue
- 5- Once the LED stays blue for two seconds the ICS is correctly paired with the app



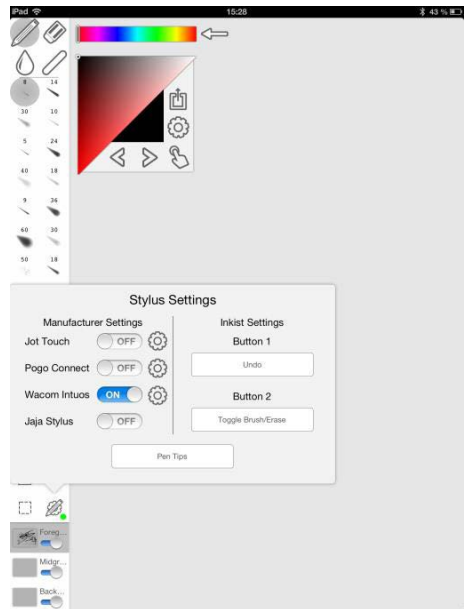
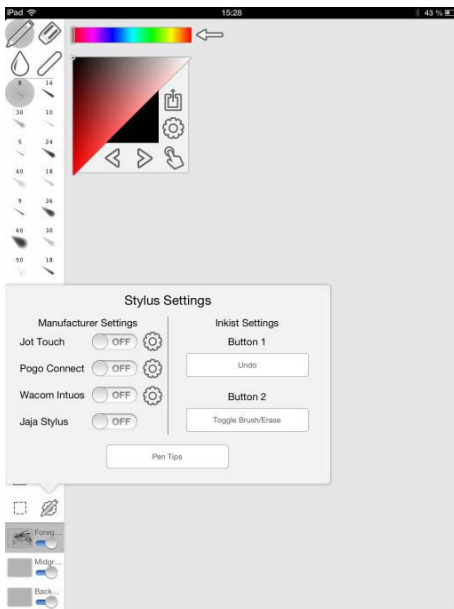
## ibisPaint X

- 1- Open app
- 2- Open image in „edit“ mode
- 3- Tap on left tool in bottom menu
- 4- Tap on “Configuration” symbol
- 5- Tap on “Wacom Intuos Creative Stylus” in Digital Stylus list
- 6- Once the LED stays blue for two seconds the ICS is correctly paired with the app. The app confirms with “Connected...: Wacom Intuos Creative Stylus”.
- 7- Note: Here several stylus settings can be changed (buttons, palm rejection, thickness and opacity)



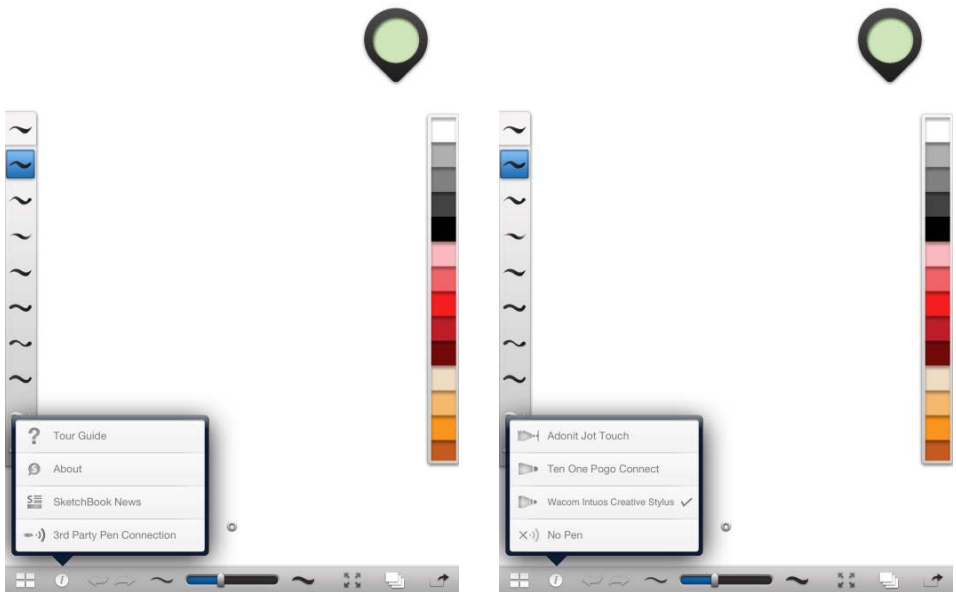
## Inkist

- 1- Open app
- 2- Tap on „Stylus Settings” symbol in left menu
- 3- Switch on “Wacom Intuos” in “Manufacturer Settings”
- 4- Once the LED stays blue for two seconds the ICS is correctly paired with the app. The app confirms with a red dot below the „Stylus Settings” symbol in left menu
- 5- Note: Here several stylus settings can be changed. (buttons, palm rejection, touch delay)



## Ink

- 1- Open app
- 2- Open image
- 3- Tap on „i“ symbol in bottom menu
- 4- Tap on “3rd Party Pen Connection”
- 5- Tap on “Wacom Intuos Creative Stylus” in list.
- 6- Once the LED stays blue for two seconds the ICS is correctly paired with the app





## Zen Brush

- 1- Open app
- 2- Tap on „send“ symbol in menu
- 3- Tap on “External Accessories” in list
- 4- Tap on “Wacom Stylus Settings” in list.
- 5- Enable “Use Wacom Stylus”
- 6- Once the LED stays blue for two seconds the ICS is correctly paired with the app. “Wacom Intuos Creative Stylus” appears in the field “Stylus Name”. Buttons settings can be changed and palm rejection can be enabled.

